

Pump Kit on 34X	2023-4
Theor. Concrete Output (cu./yds/hr)	170
Max. Pressure on Concrete (psi)	1007
Max. Strokes/Min.	26
Pump Cylinder Diameter (in.)	9
Pump Cylinder Stroke Length (in.)	79
Differential Cylinder Size (in.)	5.1
Max. Aggregate Size (in.)	2.5
Hydraulic System Pressure (psi)	5075

Specifications are subject to change without prior notice

MADE IN THE U.S.A.

All of SCHWING's pumps and booms are manufactured and tested at our state-of-the art facility in White Bear Lake Minnesota.

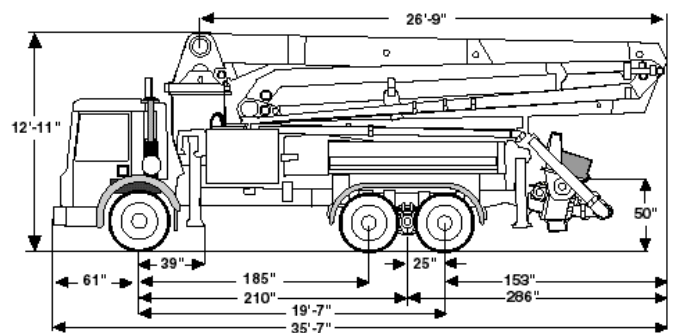
Visit our factory and see why Schwing craftsmanship really matters to your success.



Boom Specifications

	U.S.	Metric
Pipeline Diameter	5"	125 mm
Vertical Reach	111'-6"	34 m
Net Horizontal Reach	90'	27.5 m
Reach from Slewing Axis	98'-6"	30 m
Minimum Unfolding height	27'-5"	7.8 m
Section Length	First Section	26'-5"
	Second Section	23'-8"
	Third Section	23'-9"
	Fourth Section	24'-7"
Slewing Range	550°	550°
End hose length	12'-6"	4000 mm

Specifications are subject to change without prior notice



SCHWING AMERICA INC.

5900 Centerville Road
 St. Paul, MN 55127
 Tel 651-429-0999
 Fax 651-429-3464
 www.schwing.com
 1-888-SCHWING

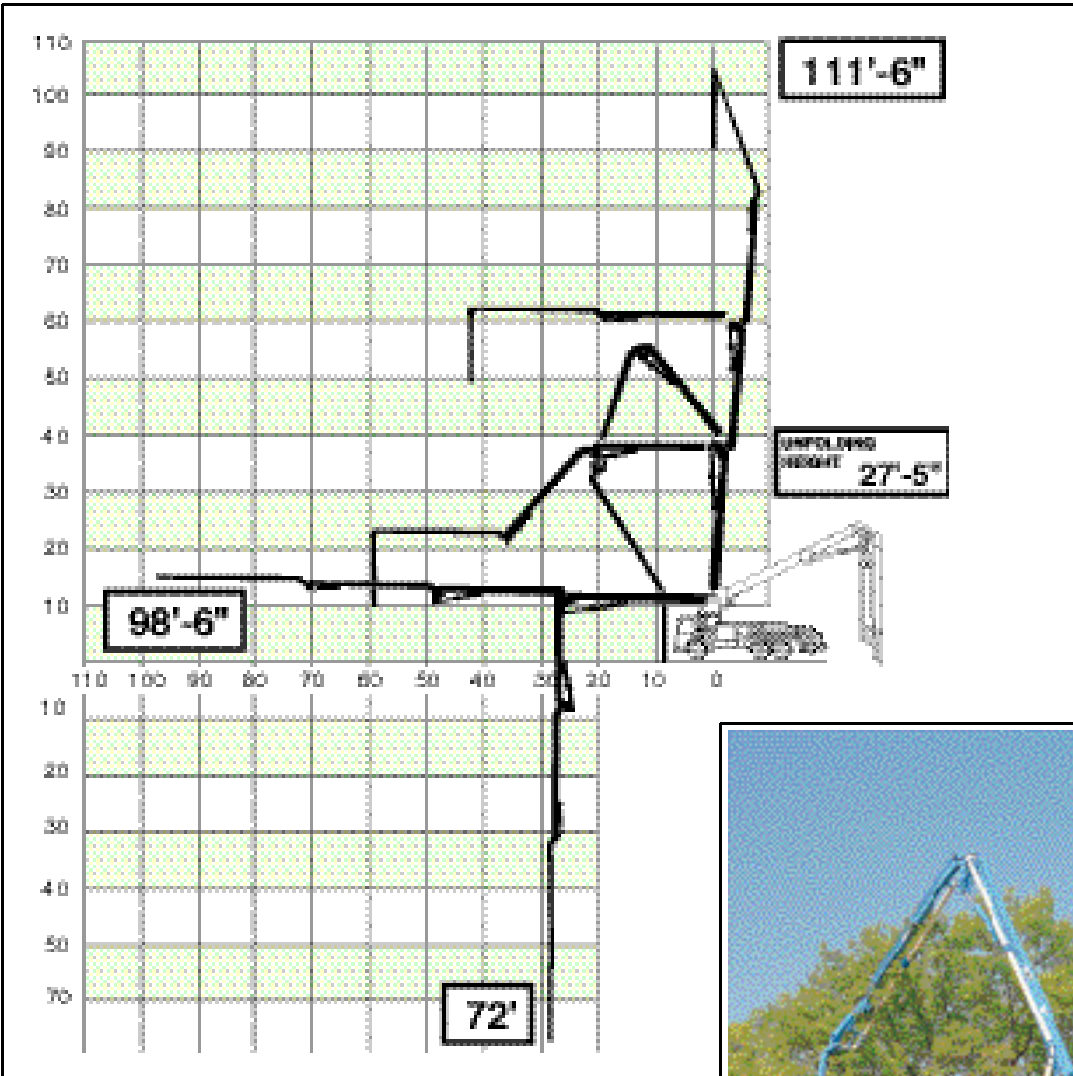
Represented by

Printed on recycled paper

The Rock Valve™ and Roll and Fold® are registered trademarks of Schwing America.

1/03-3M

Four-section boom versatility and operator convenience



Use the proven four section **Roll and Fold®** boom to reach in, out, down, over and under. The possibilities are endless and the results impressive when you snake this boom into buildings, under bridges, and into excavations. Low unfolding height allows the boom to be used in enclosed settings.

Fully extended, the 34X pumps out medium rise structures. A boom with this agility performs where no other method of concrete placement can.

The entire pump and boom rides on a rigid torsion subframe. Stability in all boom positions is the result even at maximum output.

Unique "X" style outriggers set-up fast on crowded job sites by telescoping out to provide firm footing.

Maximum stability in the smallest space is provided by the "X" style hydraulic outriggers.

